



Assembly & Operation Instructions

PEDIATRIC CPR MANIKINS

**Kim (2901), Kevin (2976), and Kyle (2951),
and the African/American versions
(2901B), (2976B), and (2951B)**



These basic CPR manikins are intended to be used to instruct individuals in the proper procedures and techniques in applying CPR to children of like physical size.



Assembly & Operation Instructions

PEDIATRIC CPR MANIKINS



The pediatric CPR manikins come to you fully assembled and ready for use.

Cross-contamination Elimination System

The mouth piece separates from the head by gently pulling it out of the face depression and away from the small valve retainer (blue). Another, clean face piece inserts into the face depression by putting the nose end of the face piece into the facial depression and then snapping the jaw end of the face piece into position.



Each student should receive a clean, sterilized mouth piece at the beginning of class to use throughout the day's work. At the end of the day, the face pieces should be de-contaminated by using your local Health Department protocols for dis-infecting.

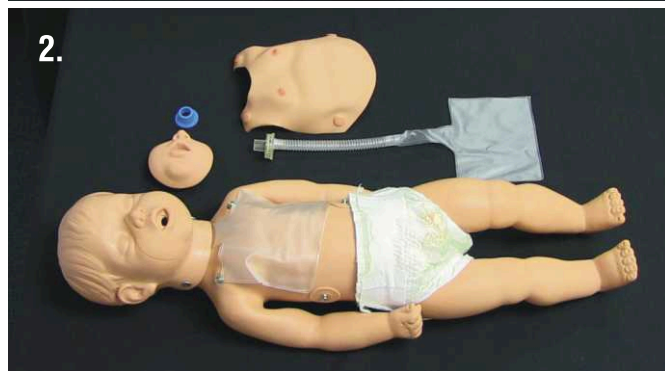
NOTE: Do Not Autoclave. Excessive heat will destroy the plastic. Clean with any water soluble cleaning substance.

The airway/lung system is a single piece unit with a one-way valve incorporated to prevent biological movement back out toward the rescuer's contact with the face piece. At the end of the day, the airway/lung system bag is discarded and a new lung system installed. Any other use of the airway/lung system will not guarantee the elimination of cross-contamination.

Installing a new Airway/Lung System

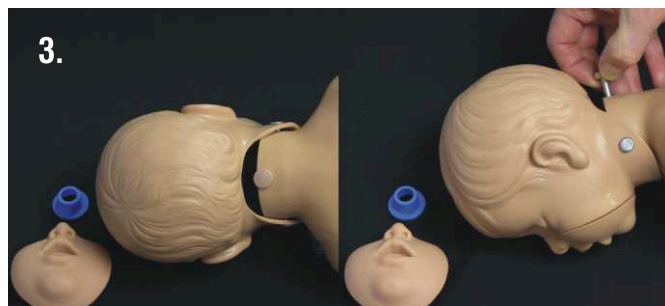
Remove the old lung system.

- Steps:**
1. Remove the face piece.
 2. Remove the chest overlay skin.



3. Turn the baby onto its stomach and pull the knob at the back of the neck away from the baby.

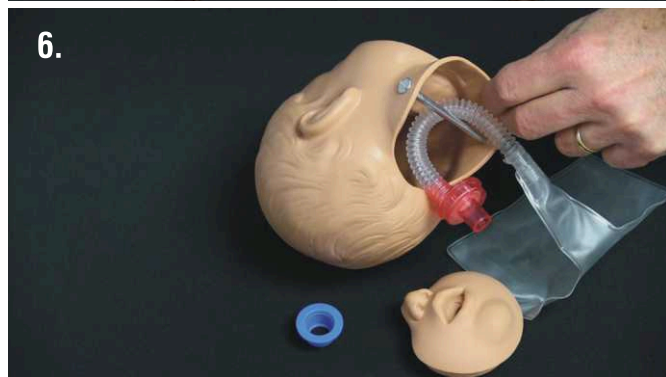
NOTE: it is not necessary to unscrew the head rod.



(continued on next page)



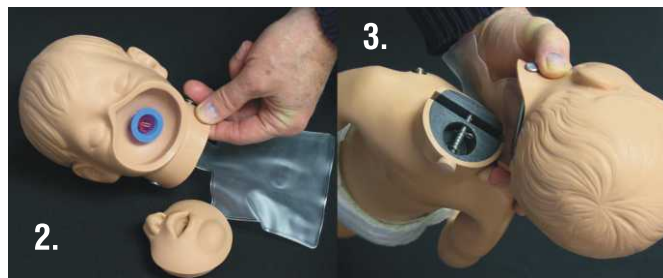
PEDIATRIC CPR MANIKINS



4. Lift the head out of the neck slot.
5. Twist and pull the blue retainer off from the front of the face depression.
6. Pull the one-way valve out of the face depression.
7. Pull the lung out of the head.

Insert the new lung system.

Steps: 1. Insert the new airway lung system one-way valve over the back side of the neck rod and into the hole of the back of the face depression.



2. Push and twist the blue retainer over the one-way valve port extending through the front of the face depression to hold the lung in place.
3. Insert the neck rod in the neck slot by pulling the knob away from the baby's back.
4. Release the knob so that the plunger rod captures the neck rod in the neck slot.



5. Spread the lung bag over the baby's chest
6. Snap the chest overlay back in place on the baby's chest.



(continued on next page)



Operation of the Manikin

To install ventilations:

- Steps:** 1. Use the chin lift method to clear the airway.
2. Blow through the mouth piece.



To do compressions:

- Steps:** 1. Place fingers in the appropriate location.
2. Depress the foam filled body the appropriate distance for the size of the child.



Cleaning the Manikin

NOTE: Do Not Autoclave. Excessive heat will destroy the plastic. Use Health Department Protocols for Disinfecting. Use any water soluble cleaning agent to clean the surface of any grime or dirt. Store the manikin dry in temperatures considered comfortable for humans. Excessive heat from storing in such locations as the trunk of your car will likely result in deformation of the head. Storing in cold temperatures may result in cracking the plastic. If it gets cold, handle it gently until the plastic warms up to comfortable room temperatures.

If the head deforms from pressure associated with storing in a warm environment, remove the head from the manikin and immerse it in a pot of steaming water for about 20 seconds. The hot water will allow the head to spring back to its original shape. Set the head on a flat surface and allow to cool in its molded shape. Then install it back on the body.

Warranty

Simulaids warrants this product to be free from any defect in materials and/or workmanship for a period of three years from the date of purchase, as evidenced by the date of invoice when the product was shipped to the end user. This warranty expressly does not cover abuse, accidental or purposeful damage, or any form of modification to the product. Simulaids reserves the right to either repair or replace affected parts or the entire unit, at their sole discretion, after investigating and reviewing the actual product and the damage. In most instances, a digital photo of the product in question showing the damage will help qualify a product for return to the factory. At no time will any product be accepted at the plant without proper return authorization issued by Simulaids.

Freight and Shipping charges are the sole responsibility of the end user. No product will be received with shipping charges due. Any product considered for warranty work must be identified by serial number and invoice number from the agency through whom the product was purchased. Without this information the product will not receive a return authorization number as required.

Return Policy

Should it be necessary to return an item for credit or for any other reason, contact our Customer Service Department to obtain an RGA Number. Please refer to your invoice number when phoning in your request for returning merchandise. Should you have any questions or wish further information on any product we manufacture call or write our Customer Service Department.